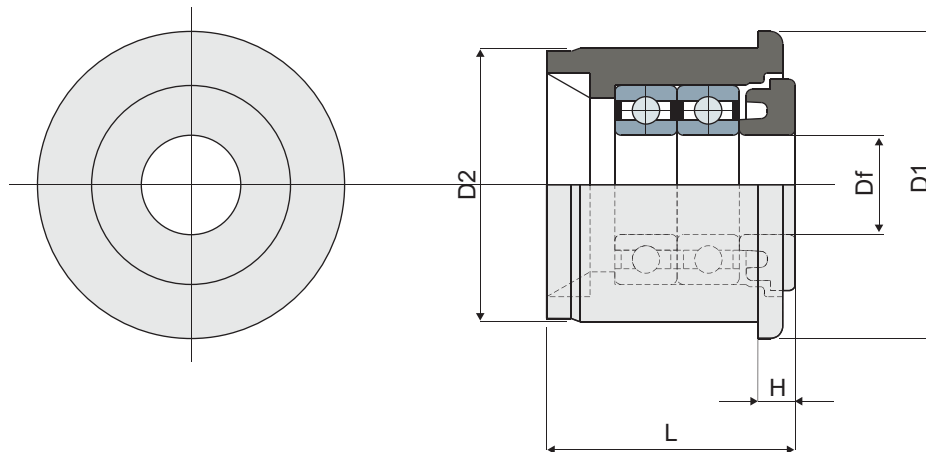
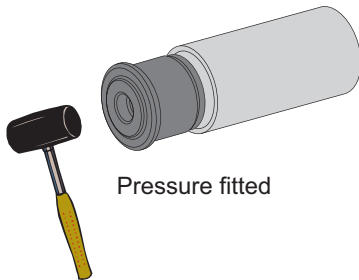


# Bearing support for conveyor rollers (with protective shield)

Part. **317**



Tube dimensions								Bore for pin of		Code	Bearing type
Outside ø (mm)	Thickness (mm)	Inside ø (mm)	D1 (mm)	D2 (mm)	H (mm)	L (mm)	Df (mm)				
25	1,5	22	25	22	3	20	8			317 / 82911	688/8-2RS
25	1,5	22	25	22	3	20	8			317 / 82912	Supplied without bearings

**MATERIALS:** Bearing support with internal part and external bushing made of polyamide black colour; bearing made of chrome steel.

**FEATURES:** To be inserted in the tube sides to build a roller conveyor.

**BOX QUANTITY:** 24 pieces.

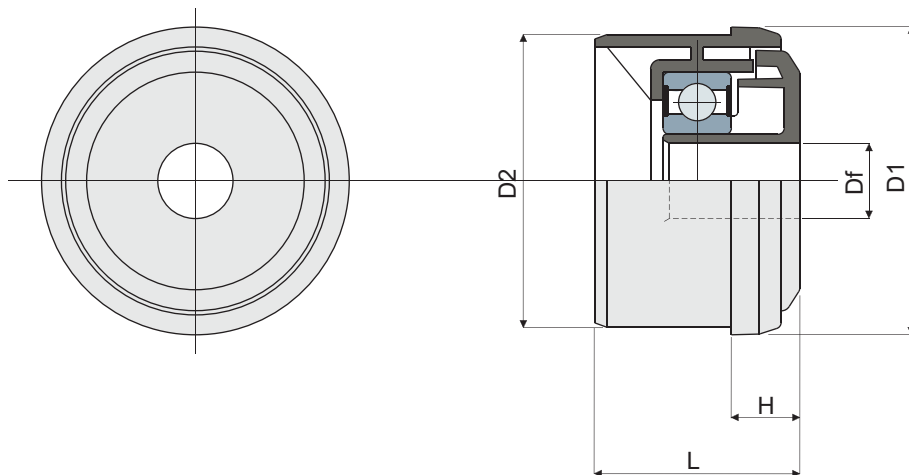
**ON REQUEST:**

- Bearing supports: other colours.
- Box Quantity: According to your request.

# Bearing support for conveyor rollers

(for idler roller)

Part. **263**



Tube dimensions			Bore for pin of					Code	Bearing type
Outside ø (mm)	Thickness (mm)	Inside ø (mm)	D1 (mm)	D2 (mm)	H (mm)	L (mm)	Df (mm)		
50	1,5	47	50	47	11	30	12	263 / 82032	6202-2RS
50	1,5	47	50	47	11	30	14	263 / 82256	6202-2RS

**MATERIALS:** Bearing support with protective shield made of polyamide grey colour; external bushing made of polyamide black colour; bearing made of chrome steel.

**FEATURES:** To be inserted in the tube sides to build a roller conveyor.

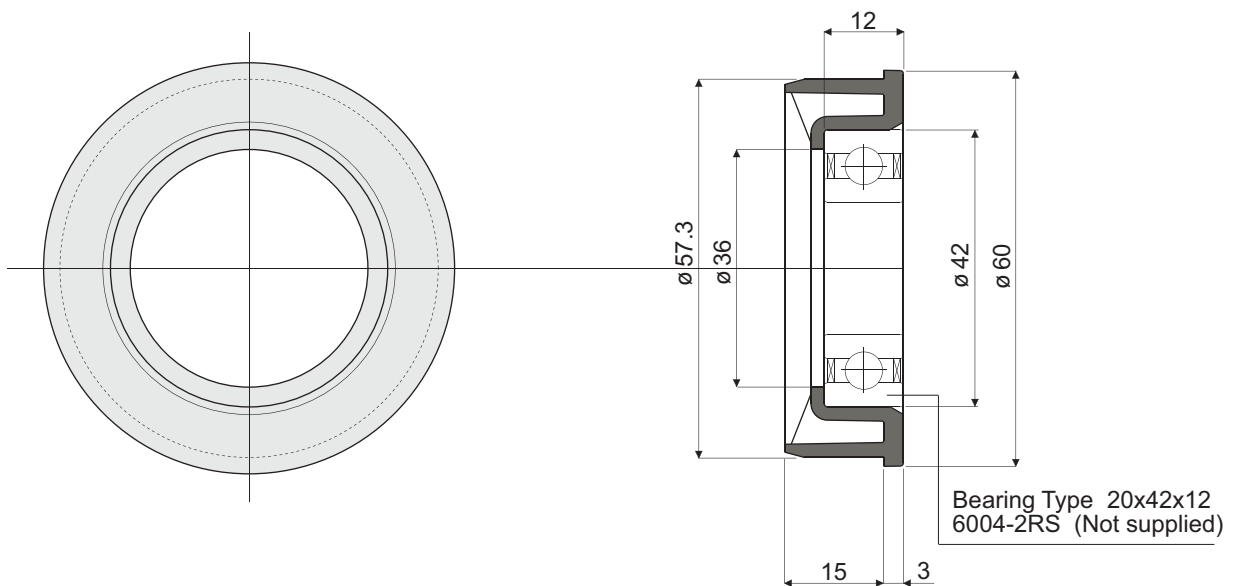
**BOX QUANTITY:** 24 pieces.

**ON REQUEST:**

- **Bearing supports:** Other colours, bores with different sizes.
- **Box Quantity:** According to your request.

# Bearing-holder flange

Part. **300**



Code

300 / 82682

**MATERIALS:** Flange is made of polyamide black colour.

**FEATURES:** To be inserted in the tube sides D=60.3 thickness 1.5 mm to build a roller conveyor or rollers for chain return. Supplied without bearing.

**BOX QUANTITY:** 24 pieces.

**ON REQUEST:**

- **Flanges:** Supplied assembled with bearings.
- **Box Quantity:** According to your request.

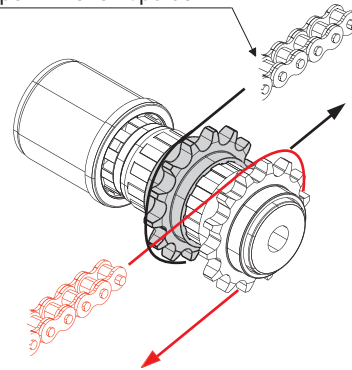
# 14 teeth sprocket

(for bearing support Part. 264)

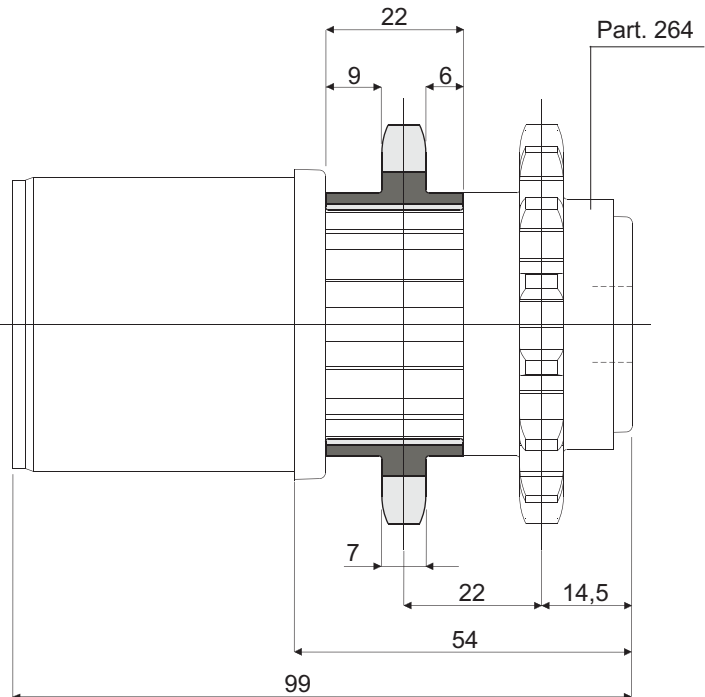
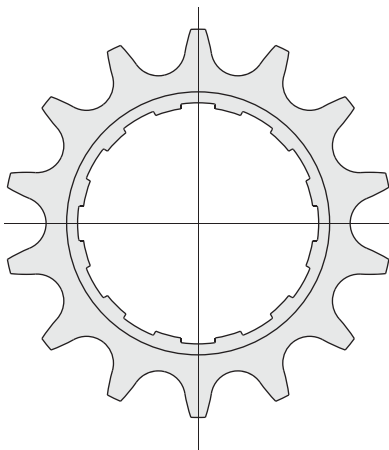
Part. **265**



Roller chain type DIN 8187 tipo 08-B1



Example of assembly



Code

265 / 82034

**MATERIALS:** Drive sprocket is made of polyamide black colour.

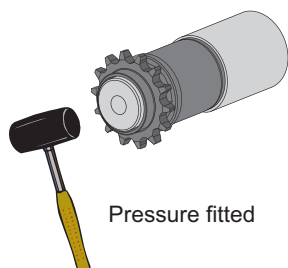
**FEATURES:** Accessory to be used with bearing support Part.264 to make the drive roller to roller. This drive type allows a greater torque.

**BOX QUANTITY:** 24 pieces.

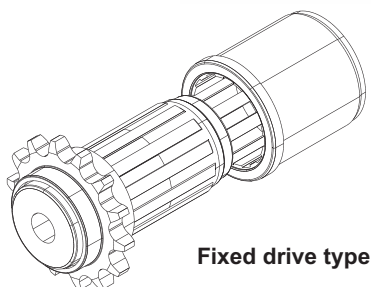
**ON REQUEST:**

- **Sprockets:** other colours.
- **Box Quantity:** According to your request.

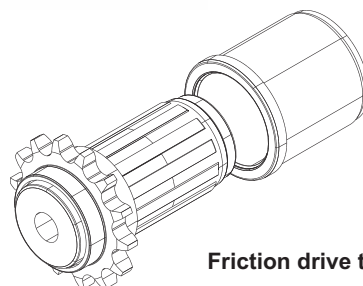
# Bearing support for conveyor rollers (for drive roller)

Part. **264**


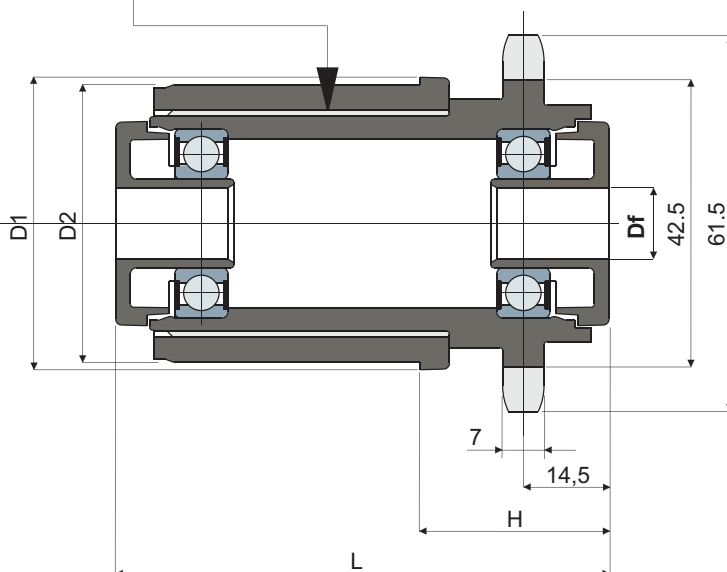
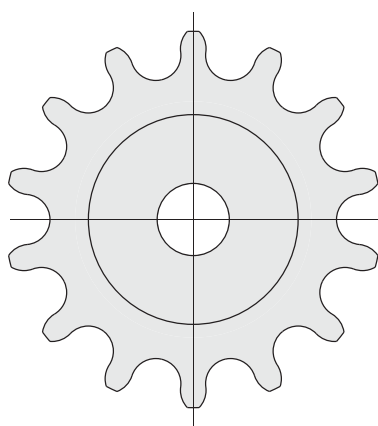
Pressure fitted



Fixed drive type



Friction drive type



Tube dimensions			Bore for pin of					Fixed drive type	Friction drive type	Bearing type
Outside ø (mm)	Thickness (mm)	Inside ø (mm)	D1 (mm)	D2 (mm)	H (mm)	L (mm)	Df (mm)	Code	Code	
50	1,5	47	50	47	32	83	12	264 / 82033	264 / 82217	6002-2RS
50	1,5	47	50	47	32	83	14	264 / 82215	264 / 82218	6002-2RS

**MATERIALS:** Bearing support with protective shield made of polyamide grey colour; external bushing made of polyamide black colour; bearing made of chrome steel.

**FEATURES:** To be inserted in the tube sides to build a roller conveyor. Drive sprocket with 14 teeth for roller chain type DIN 8187-08-b1.

**BOX QUANTITY:** 24 pieces.

**ON REQUEST:**

- **Bearing supports:** other colours, bores with different sizes.
- **Box Quantity:** According to your request.